

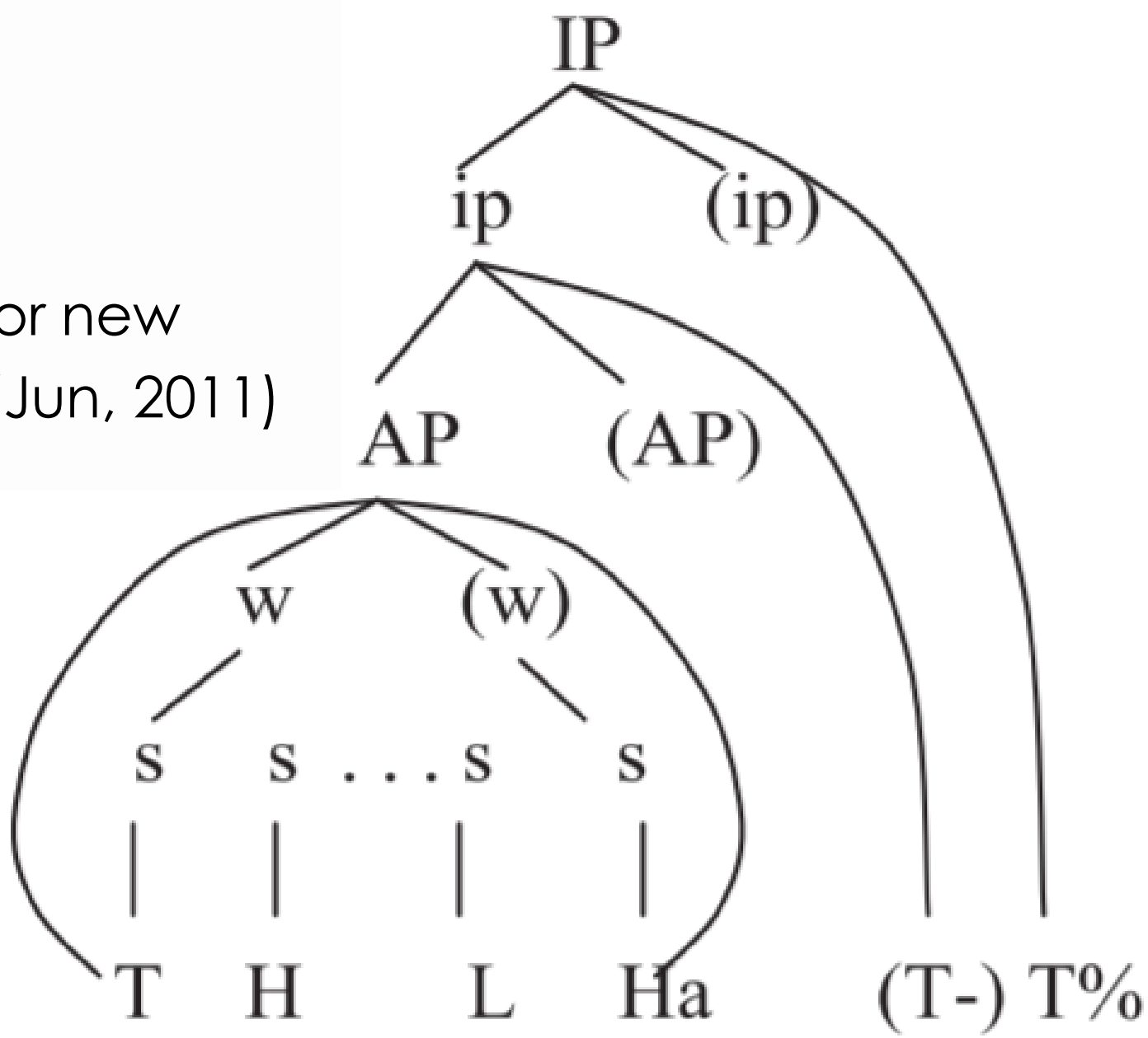
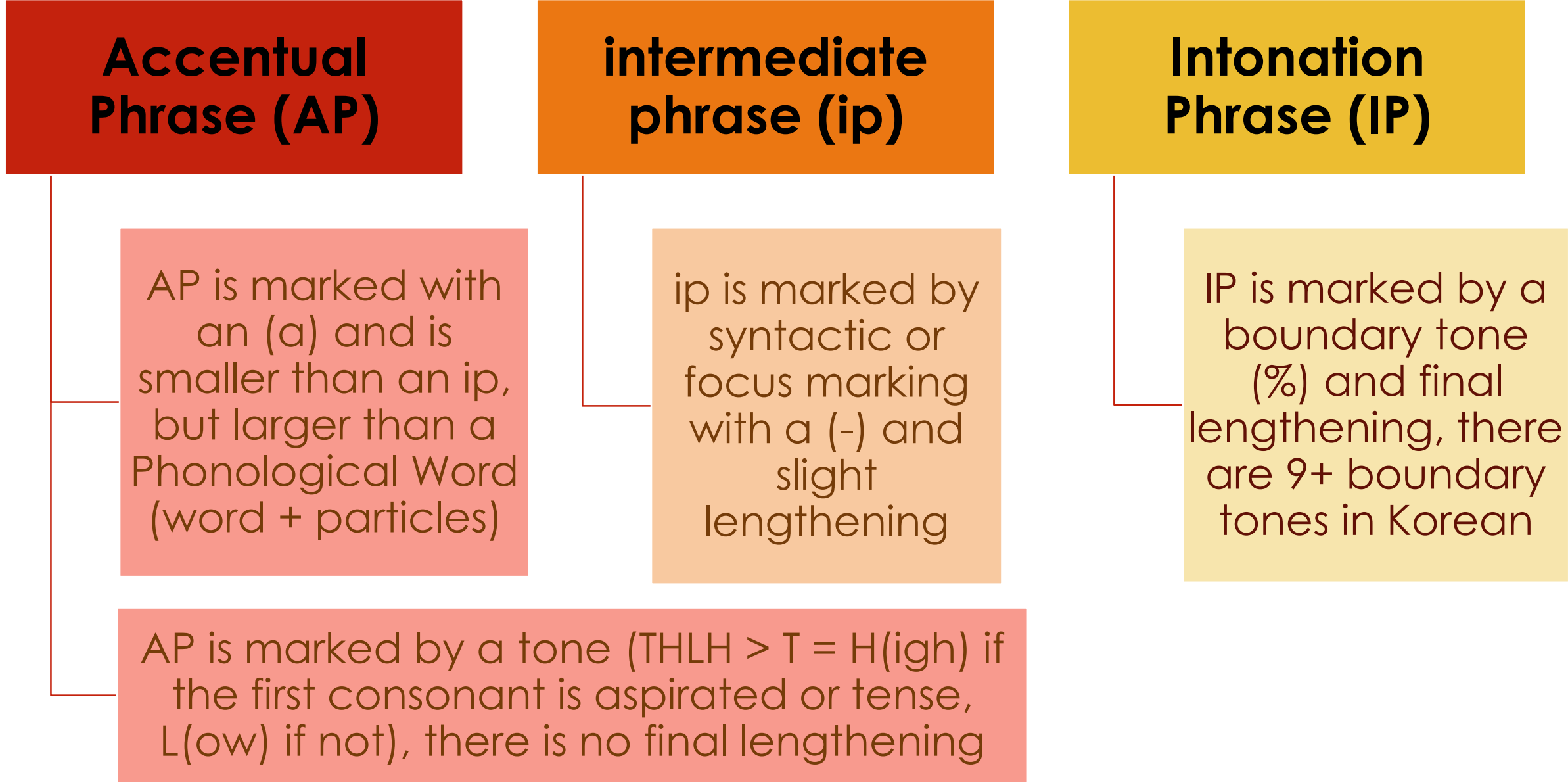
SEOUL KOREAN INTONATION & THE KOREAN INTONATIONAL LABELLING SYSTEM, K-TOBI

Background

Contributor: Bonnie J. Fox | Reviewers: Dan Holden and Anna Mendoza | Date: 2021-02-01

- 1. K-ToBI is a transcription system for standard Seoul Korean prosody
- 2. It follows a hierarchical model of prosody
- 3. K-ToBI has been revised from previous versions (Jun, 2007) to accommodate for new data indicating certain aspects not previously labelled could be meaningful (Jun, 2011)

Three Main Prosody Units:



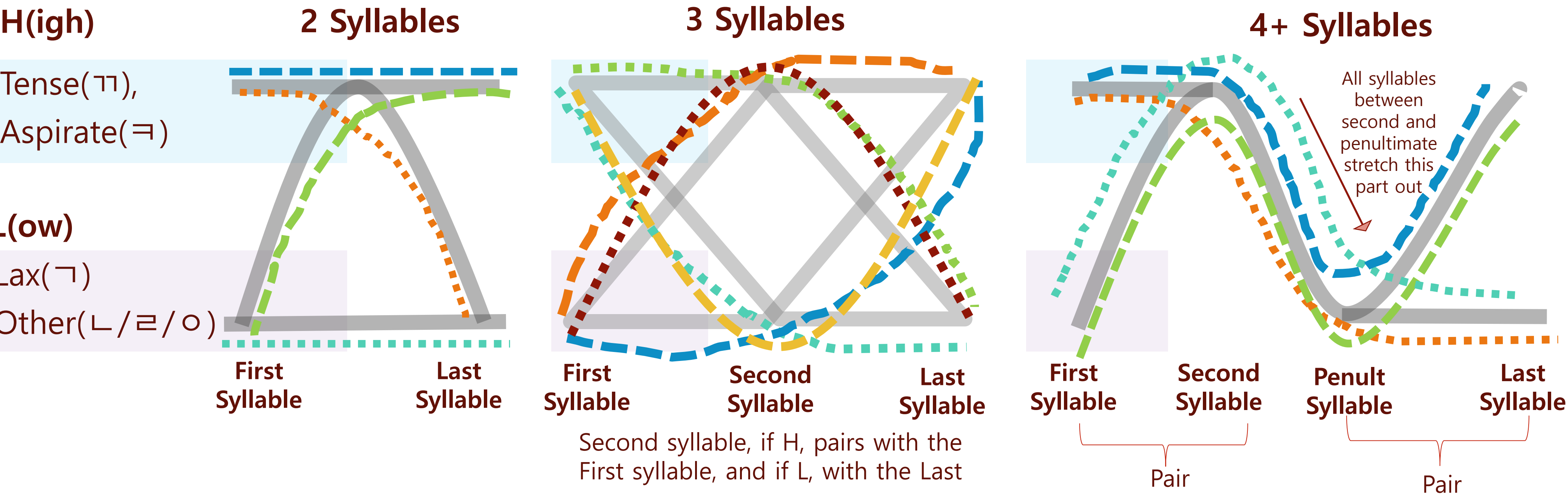
Intonational Model of Seoul Korean

(Reprinted from Jun 2011)

w: phonological word, s: syllable

An utterance in Korean will always have an Intonational Phrase and an Accentual Phrase

Accentual Phrases: Tunes for Word + Particles → All possible shapes for APs depicted below



Intermediate Phrases: Mid-Sentence Reset

Manifests with pausing and/or raising the pitch back up at mid-sentence words that are either: 1) focused (highlighted), or 2) at a the edge of a syntactic phrase (like at a sentence connector)

Intonation Phrases: The Boundary Tone

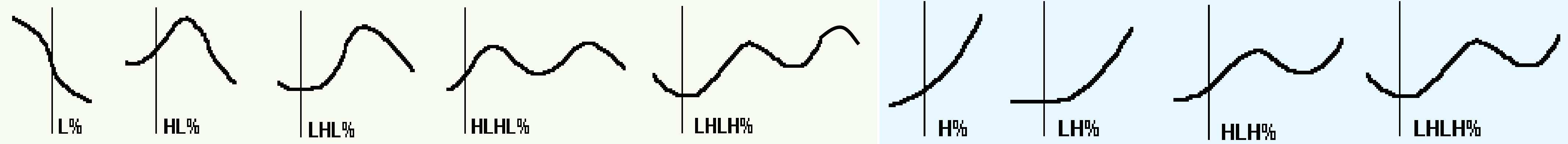
Usually the last syllable of a phrase, this will be longer and can have different patterning than the word tune

9+ Identified Boundary Tones

(Reprinted from Jun, 2007)

Falling Tones

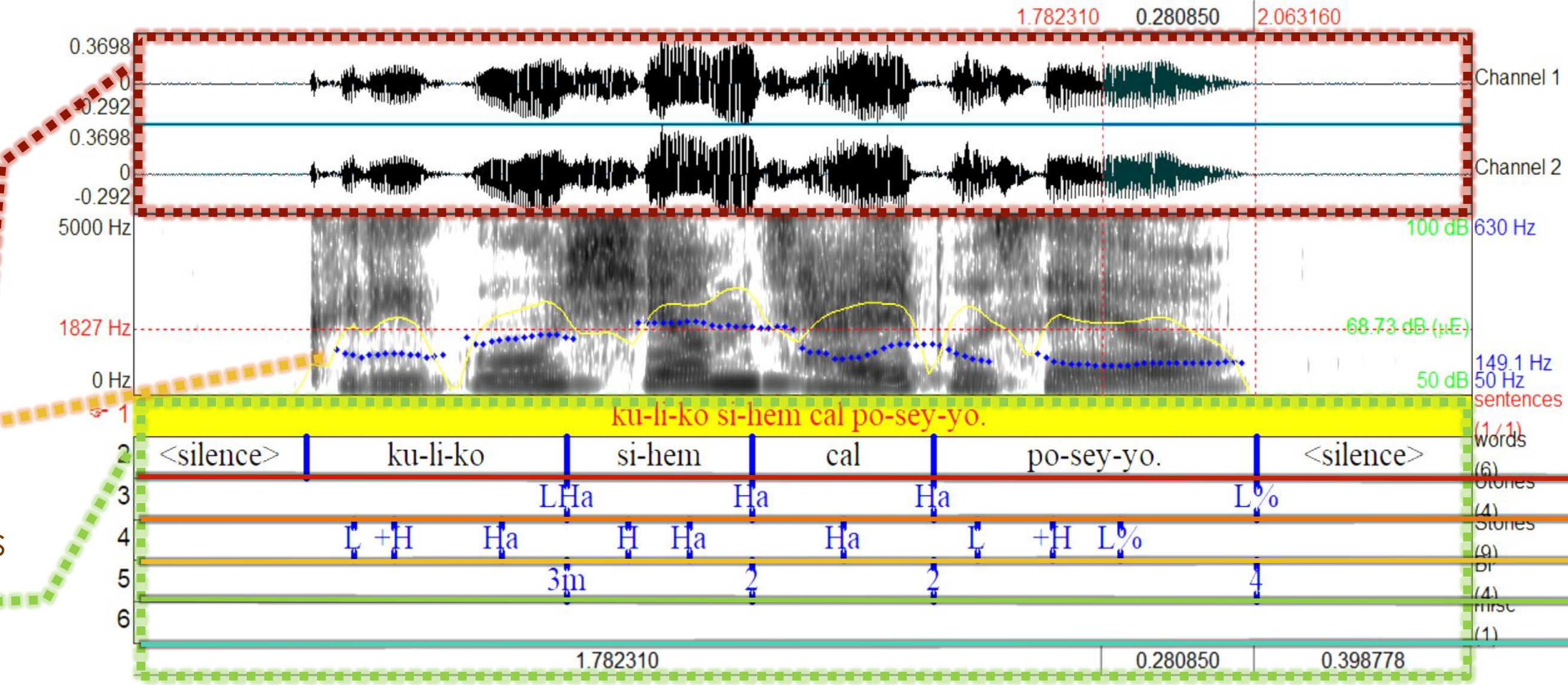
Rising Tones



A K-ToBI Transcription:

Consists Minimally of a:

- 1) Recording of the speech
- 2) Record of the pitch track
- 3) Transcription with proper symbolic labels for events on 5 parallel tiers



- 5 Parallel Tiers:
- 1. A Word Tier
 - 2. A Phonological Tone Tier
 - 3. A Phonetic Tone Tier
 - 4. A Break-index Tier
 - 5. A Miscellaneous Tier

Original Articles:

Jun, S.-a. (2007). The Intermediate Phrase in Korean Intonation: Evidence from Sentence Processing. In C. Gussenhoven & T. Riad (Eds.) *Tones and Tunes: Studies in Word and Sentence Prosody*, (pp. 143-167). Mouton de Gruyter.

Jun, S.-a. (2011). Prosodic Markings of Complex NP Focus, Syntax, and the Pre-/Post-Focus String. In M. B. Washburn, K. McKinney-Bock, E. Varis, A. Sawyer, & Barbara Tomaszewicz (Eds.), *Proceedings of the 28th West Coast Conference on Formal Linguistics (WCCFL)* (214-230). Cascadia Proceedings Project. www.lingref.com, document #2454.